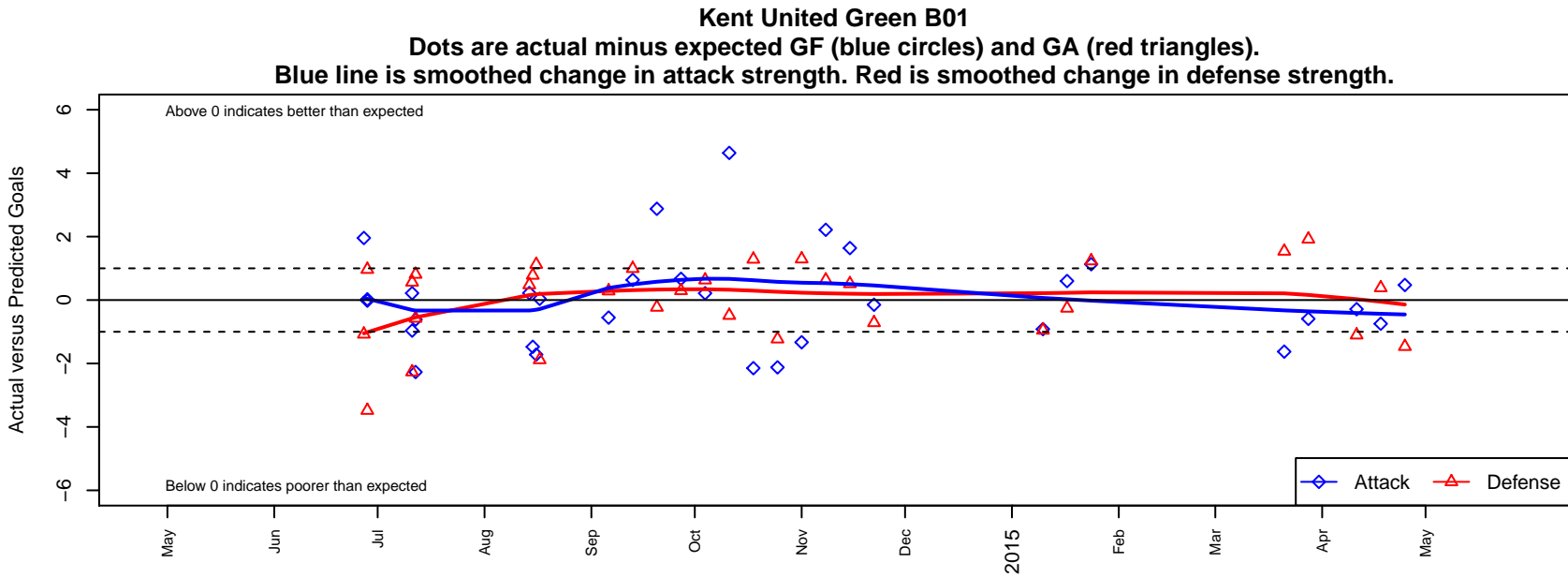


Kent United Green B01

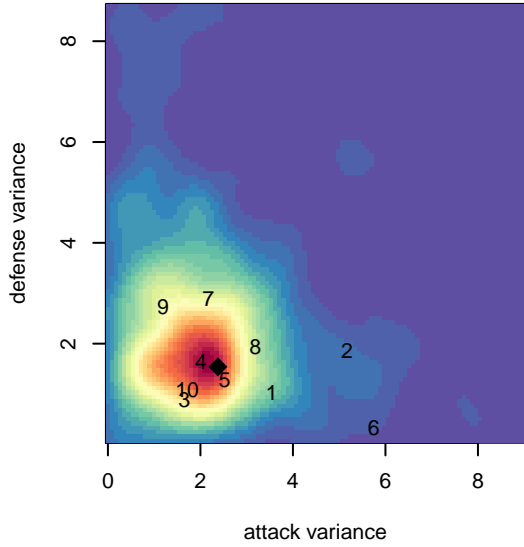
Kent United
 Kent, WA
 B01 total strength=894
 attack=1.85 defense=1.04
 fall league = NPSL B13D2

alt names used:
 KYSA KENT UNITED KENT UNITED B01 GRE
 KENT UNITED B01 GREEN (WA)
 Kent United B01 Green
 Kent United Green [B01]
 Kent United B01 Green
 Kent United B01 Green

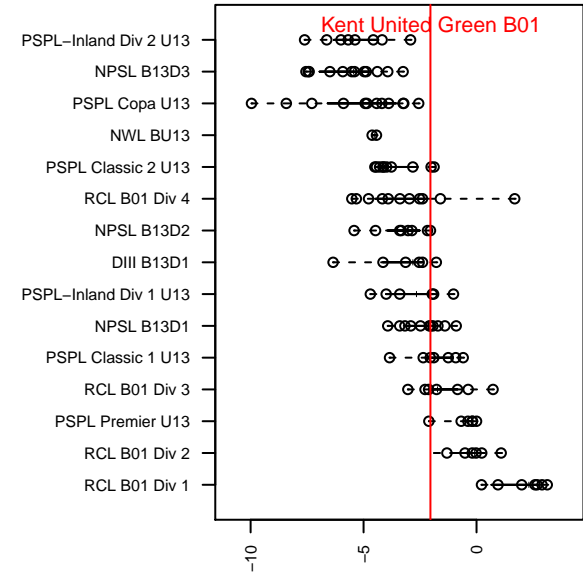
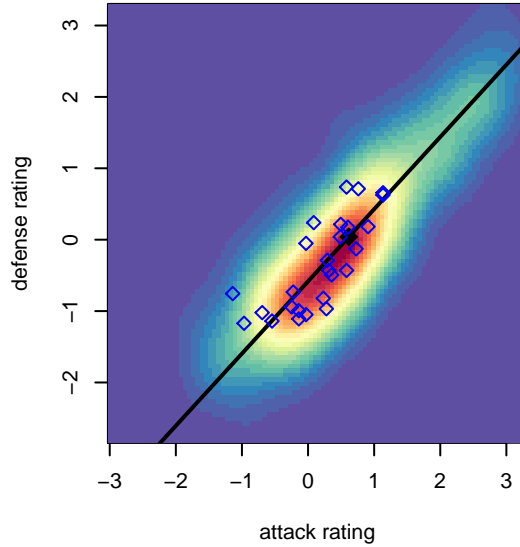
Venues played:
 2014 RVS Classic BU13
 2014 Kent Cornucopia Cup U13 Gold U13
 2014 Bigfoot Silver U13
 2014 NPSL B13D2
 2014 Founders Cup B01
 2014 WYS Presidents Cup B01 Division 2



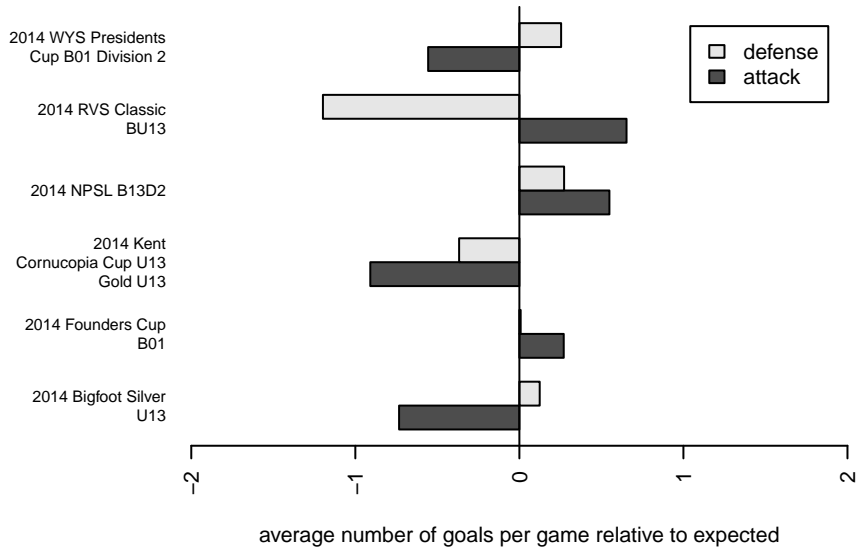
**attack and defense variance (black dot)
relative to other teams
and top 10 in region**



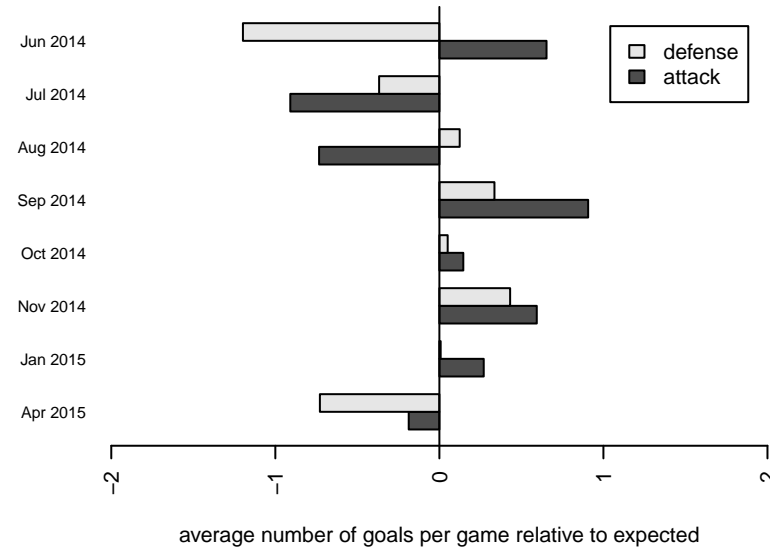
**attack and defense rating
relative to others at age
and all opponents in last 13 months**



Performance relative to 13 month average



Performance relative to 13 month average



date	home		away		venue	pred.home	pred.away
2015-04-25	FWFC Blue B01	4	Kent United Green B01	2	2014 WYS Presidents Cup B01 Division 2	2.53	1.53
2015-04-18	Kent United Green B01	3	FWFC White B01	0	2014 WYS Presidents Cup B01 Division 2	3.75	0.38
2015-04-11	Blue Mountain Jaguars B01	4	Kent United Green B01	1	2014 WYS Presidents Cup B01 Division 2	2.90	1.29
2015-03-28	Kent United Green B01	1	Kitsap Alliance FC Red B01	0	2014 WYS Presidents Cup B01 Division 2	1.59	1.92
2015-03-21	SSC Shadow B B01	0	Kent United Green B01	0	2014 WYS Presidents Cup B01 Division 2	1.54	1.63
2015-01-24	Kent United Green B01	3	South Tacoma United Blanco B01	1	2014 Founders Cup B01	1.87	2.23
2015-01-17	Washington Timbers Crimson B01	1	Kent United Green B01	6	2014 Founders Cup B01	0.74	5.40
2015-01-10	Kent United Green B01	1	Seattle United S Blue B01	2	2014 Founders Cup B01	1.92	1.05
2014-11-22	Kent United Green B01	3	Seattle United Shoreline Blue B01	2	2014 NPSL B13D2	3.15	1.29
2014-11-15	FC Everett B01	0	Kent United Green B01	7	2014 NPSL B13D2	0.51	5.36
2014-11-08	SCORE Defiance B01	1	Kent United Green B01	4	2014 NPSL B13D2	1.63	1.79
2014-11-01	Kent United Green B01	2	Whatcom Rangers White B01	0	2014 NPSL B13D2	3.33	1.29
2014-10-25	Mukilteo Strikers B01	3	Kent United Green B01	1	2014 NPSL B13D2	1.77	3.12
2014-10-18	Seattle United Shoreline Blue B01	0	Kent United Green B01	1	2014 NPSL B13D2	1.29	3.15
2014-10-11	Kent United Green B01	10	FC Everett B01	1	2014 NPSL B13D2	5.36	0.51
2014-10-04	Kent United Green B01	2	SCORE Defiance B01	1	2014 NPSL B13D2	1.79	1.63
2014-09-27	Whatcom Rangers White B01	1	Kent United Green B01	4	2014 NPSL B13D2	1.29	3.33
2014-09-20	Kent United Green B01	6	Mukilteo Strikers B01	2	2014 NPSL B13D2	3.12	1.77
2014-09-13	Lake Hills Legends B01	0	Kent United Green B01	6	2014 NPSL B13D2	0.99	5.37
2014-09-06	Kent United Green B01	2	Seattle United W White B01	1	2014 NPSL B13D2	2.55	1.29
2014-08-17	Kent United Green B01	1	Seattle United W Blue B01	4	2014 Bigfoot Silver U13	0.96	2.12
2014-08-16	NK Havoc B01	0	Kent United Green B01	2	2014 Bigfoot Silver U13	1.12	3.72
2014-08-15	Cascade FC Green B01	0	Kent United Green B01	4	2014 Bigfoot Silver U13	0.78	5.47
2014-08-14	Snohomish United Red B01	1	Kent United Green B01	4	2014 Bigfoot Silver U13	1.48	3.78
2014-07-12	Kent United Green B01	4	Snohomish United White B01	1	2014 Kent Cornucopia Cup U13 Gold U13	6.27	0.42
2014-07-12	Kent United Green B01	1	Kent United White B01	1	2014 Kent Cornucopia Cup U13 Gold U13	1.62	1.81
2014-07-11	Alaska Rush 02 B01	4	Kent United Green B01	0	2014 Kent Cornucopia Cup U13 Gold U13	1.73	0.96
2014-07-11	NWSC Islanders B01	0	Kent United Green B01	6	2014 Kent Cornucopia Cup U13 Gold U13	0.56	5.78

date	home		away		venue	pred.home	pred.away
2014-06-28	Kent United Green B01	1	PacNW Blue B01	7	2014 RVS Classic BU13	0.98	3.52
2014-06-28	FC Tacoma White B01	0	Kent United Green B01	5	2014 RVS Classic BU13	0.96	5.02
2014-06-27	Kent United Green B01	6	Slammers White B01	2	2014 RVS Classic BU13	4.04	0.92